

Dr. John S. Armstrong-Altrin
Laboratorio de Sedimentología
Instituto de Ciencias del Mar y Limnología, CU, CDMX
E-mail: armstrong@cmarl.unam.mx
Tel.: 55 56225692

EDITORIAL BOARD MEMBER EN REVISTAS INTERNACIONALES:

Associate Editor *Sedimentary Geology* (Elsevier; **Impact Factor 2022: 2.8**)

Link: <https://www.journals.elsevier.com/sedimentary-geology>

Associate Editor: *Journal of Palaeogeography* (Elsevier; **IF: 2.9**)

Link: <https://www.journals.elsevier.com/journal-of-palaeogeography/editorial-board>

Associate Editor *Geological Journal* (Wiley; **IF: 1.8**)

<https://onlinelibrary.wiley.com/page/journal/10991034/homepage/editorialboard.html>

Associate Editor *Arabian Journal of Geosciences* (**IF: 1.827**; Springer Berlin Heidelberg). Link: <https://www.springer.com/journal/12517/editors>

Associate Editor: *Carpathian Journal of Earth and Environmental Sciences* (**IF: 1.2**)

Link: http://www.cjees.ro/editorial_board.php

Editor in Chief: *Journal Indian Association of Sedimentologists*

Link: <http://indiasedimentologists.com/>

PUBLICATIONS [provided with latest impact factor of the Journals (**total number of citations obtained are 4996 and 6902 by Scopus and Google Scholar**, respectively)] (**[h index Scopus = 40, Google Scholar = 44](#)**).

Scopus Author ID: 6508315495; Orchid ID:0000-0003-3910-5195

- 1) Ramasamy, S and **Armstrong Altrin Sam, J.** (1998). Inferences on rhodoids from Neogene carbonates of Kudankulam, Tamil Nadu. *Journal of the Geological Society of India*, vol. 52, pp. 341-344. (**SCI Impact Factor 2022: 1.3**). ISSN PRINT: 0016-7622; ISSN ELECTRONIC: 0974-6889. <https://www.geosocindia.org/index.php/jgsi/article/view/68824>
- 2) Ramasamy, S., Madhavaraju, J and **Armstrong Altrin Sam, J.** (2000). Dropstones in Talchir Sediments of Palar Basin, Tamil Nadu - Implications on depositional conditions and palaeoclimate. *Journal of the Geological Society of India*, vol. 56, pp. 47-52 (**SCI Impact Factor 2022: 1.3; Citas Scopus = 3**). ISSN PRINT: 0016-7622; ISSN ELECTRONIC: 0974-6889. <https://www.geosocindia.org/index.php/jgsi/article/view/69635>

- 3) Ramasamy, S., Madhavaraju, J. and **Armstrong Altrin Sam, J.** (2000). Dropstones in Talchir Sediments of Palar Basin, Tamil Nadu - Implications on depositional conditions and palaeoclimate – Reply. *Journal of the Geological Society of India*, vol. 56, pp. 680-681 (SCI Impact Factor 2022: 1.3; **Citas Scopus = 3**). ISSN PRINT: 0016-7622; ISSN ELECTRONIC: 0974-6889.
- 4) **Armstrong Altrin Sam, J.**, Ramasamy, S. and Makhnach, A. (2001). Stable isotope geochemistry and evidence for meteoric diagenesis in Kudankulam Formation, Tamil Nadu. *Journal of the Geological Society of India*, vol. 57(1), pp. 39-48 (SCI Impact Factor 2022: 1.3; **Citas Scopus = 6**). ISSN PRINT: 0016-7622; ISSN ELECTRONIC: 0974-6889. <https://www.geosocindia.org/index.php/jgsi/article/view/82668>
- 5) **Armstrong-Altrin, J.S.**, Verma, S.P., Madhavaraju, J., Lee, Y.I. and Ramasamy, S. (2003). Geochemistry of Upper Miocene Kudankulam limestones, southern India. *International Geology Review*, vol. 45(1), pp. 16-26 (SCI Impact Factor 2022: 2.6; **Citas Google Scholar = 94; Scopus = 60**). ISSN PRINT: 0020-6814; ISSN ELECTRONIC: 1938-2839; DOI: <https://doi.org/10.2747/0020-6814.45.1.16>.
- 6) **Armstrong-Altrin, J.S.**, Lee, Y.I., Verma, S.P. and Ramasamy, S. (2004). Geochemistry of sandstones from the Upper Miocene Kudankulam Formation, southern India: Implications for provenance, weathering, and tectonic setting. *Journal of Sedimentary Research*, vol. 74(2), pp. 285-297 (SCI Impact Factor 2022: 2.7; **Citas Google Scholar = 608; Scopus = 395**). ISSN PRINT: 1527-1404; DOI: <https://doi.org/10.1306/082803740285>.
- 7) Madhavaraju, J., Kolosov, I., Buhlak, D., **Armstrong-Altrin, J.S.**, Ramasamy, S. and Mohan, S.P. (2004). Carbon and oxygen isotopic signatures in Albian-Danian limestones of Cauvery basin, southeastern India. *Gondwana Research*, vol. 7(2), pp. 527-537 (SCI Impact Factor 2022: 6.1; **Citas Google Scholar = 35; Scopus = 26**). ISSN PRINT:1342-937X; DOI: [https://doi.org/10.1016/S1342-937X\(05\)70802-9](https://doi.org/10.1016/S1342-937X(05)70802-9).
- 8) **Armstrong-Altrin, J.S.** and Verma, S.P. (2005). Critical evaluation of six tectonic setting discrimination diagrams using geochemical data of Neogene sediments from known tectonic settings. *Sedimentary Geology*, vol. 177(1-2), p. 115-129 (SCI Impact Factor 2022: 2.8; **Citas Google Scholar = 426; Scopus = 276**). DOI: <https://doi.org/10.1016/j.sedgeo.2005.02.004>. **RECEIVED MOST CITED ARTICLE AWARD 2018-2019.**
- 9) **Armstrong-Altrin, J.S.**, Madhavaraju, J., Ramasamy, S. and Gladwin Gnana Asir, N. (2005). Provenance and depositional history of sandstones from the upper Miocene Kudankulam Formation, Tamil Nadu. *Journal of the Geological Society of India*, vol. 66, pp. 59-65. (SCI Impact Factor: 2022: 1.3; **Citas Google**

- Scholar = 28; Scopus = 19***. ISSN PRINT: 0016-7622; ISSN ELECTRONIC: 0974-6889. <https://www.geosocindia.org/index.php/jgsi/article/view/82316>
- 10) Madhavaraju, J., Lee, Y.I., **Armstrong-Altrin, J.S.** and Hussain, S.M. (2006). Microtextures on detrital quartz grains of Upper Maastrichtian-Danian rocks of the Cauvery Basin, Southeastern India: Implications for provenance and depositional environments. *Geosciences Journal*, vol. 10(1), pp. 23-34 (**SCI Impact Factor 2022: 1.2; Citas Google Scholar = 45; Scopus = 33**). ISSN PRINT: 1226-4806; DOI: <https://doi.org/10.1007/BF02910330>.
 - 11) Ayyamperumal, T., Jonathan, M.P., Srinivasalu, S., **Armstrong-Altrin, J.S.** and Ram Mohan, V. (2006). Assessment of acid leachable trace metals in sediment cores from River Uppanar, Cuddalore, Southeast coast of India. *Environmental Pollution*, vol. 143(1), pp. 34-45 (**SCI Impact Factor 2022: 8.9; Citas Google Scholar = 116; Scopus = 80**). ISSN PRINT: 0269-7491; DOI: <https://doi.org/10.1016/j.envpol.2005.11.019>.
 - 12) Janaki Raman, D., Jonathan, M.P., Srinivasalu, S., **Armstrong-Altrin, J.S.**, Mohan, S.P., Ram-Mohan, V. (2007). Trace metal enrichments in core sediments in Muthupet mangroves, SE coast of India: Application of acid leachable technique. *Environmental Pollution*, vol. 145(1), pp. 245-257 (**SCI Impact Factor 2022: 8.9; Citas Google Scholar = 148; Scopus = 94**). ISSN PRINT: 0269-7491; DOI:<https://doi.org/10.1016/j.envpol.2006.03.012>.
 - 13) Nagarajan, R., **Armstrong-Altrin, J.S.**, Nagendra, R., Madhavaraju, J. and Moutte, J. (2007). Petrography and geochemistry of terrigenous sedimentary rocks in the Neoproterozoic Rabanpalli Formation, Bhima Basin, Southern India: Implications for paleoweathering conditions, provenance, and source rock composition. *Journal of the Geological Society of India*, vol. 70(2), pp. 297-312 (**SCI Impact Factor 2022: 1.3; Citas Google Scholar = 90; Scopus = 59**). <https://www.geosocindia.org/index.php/jgsi/article/view/81286>
 - 14) Gladwin Gnana Asir, N., Ramasamy, S., **Armstrong-Altrin, J.S.**, Madhavaraju, J. and Stephen Pitchaimani, V. (2007). Depositional and diagenetic inferences of a shallow core near Tuticorin coast, Tamil Nadu. *Journal of the Geological Society of India*, vol. 70 (6), pp. 1021-1032 (**SCI Impact Factor 2022: 1.3; Citas Google Scholar = 2; Scopus = 2**). ISSN PRINT: 0016-7622; ISSN ELECTRONIC: 0974-6889. <https://www.geosocindia.org/index.php/jgsi/article/view/81114>
 - 15) Nagarajan, R., Madhavaraju, J., Nagendra, R., **Armstrong-Altrin, J.S.** and Moutte, J. (2007). Geochemistry of Neoproterozoic shales of the Rabanpalli formation, Bhima Basin, northern Karnataka, southern India: implications for provenance and paleoredox conditions. *Revista Mexicana de Ciencias Geológicas*, vol. 24(2), pp. 150-160 (**SCI Impact Factor 2022: 0.8; Citas Google**

- Scholar* = 247; *Scopus* = 149). ISSN PRINT: 1026-8774.
<http://www.rmcb.unam.mx/index.php/rmcb/article/view/726>
- 16) Jonathan, M.P., Srinivasalu, S., Thangadurai, N., Ayyamperumal, T., **Armstrong-Altrin, J.S.**, Ram-Mohan, V. (2008). Contamination of Uppanar River and coastal waters off Cuddalore, Southeast coast of India. *Environmental Geology* vol. 53(7), pp. 1391-1404 (SCI Impact Factor 2011: 1.127; *Citas Google Scholar* = 67; *Scopus* = 40). ISSN PRINT: 0099-0094; DOI: <https://doi.org/10.1007/s00254-007-0748-0>.
- 17) Srinivasalu, S., Thangadurai, N., Jonathan, M.P., **Armstrong-Altrin, J.S.**, T. Ayyamperumal, V. Ram-Mohan (2008). Evaluation of trace-metal enrichments from the 26 December 2004 tsunami sediments along the southeast coast of India. *Environmental Geology*, vol. 53(8), pp. 1711-1721 (SCI Impact Factor 2011: 1.127; *Citas Google Scholar* = 63; *Scopus* = 44). ISSN PRINT: 0099-0094; DOI: <https://doi.org/10.1007/s00254-007-0777-8>.
- 18) Nagarajan, R., Sial, A.N., **Armstrong-Altrin, J.S.**, Madhavaraju, J., Nagendra, R. (2008). Carbon and oxygen isotope geochemistry of Neoproterozoic limestones of the Shahabad Formation, Bhima Basin, Karnataka, southern India. *Revista Mexicana de Ciencias Geológicas*, vol. 25(2), pp. 225-235 (SCI Impact Factor 2022: 1.06 Q4; *Citas Google Scholar* = 72; *Scopus* = 46). ISSN PRINT: 1026-8774.
- 19) **Armstrong-Altrin, J.S.**, Lee, Y.I., Verma, S.P. and Worden, R.H. (2009). Carbon, oxygen, and strontium isotope geochemistry of carbonate rocks of the upper Miocene Kudankulam Formation, southern India: Implications for paleoenvironment and diagenesis. *Chemie der Erde - Geochemistry*, vol. 69(1), pp. 45-60. (SCI Impact Factor 2022: 3.7 Q2; *Citas Google Scholar* = 86; *Scopus* = 63). DOI: <https://doi.org/10.1016/j.chemer.2008.09.002>.
- 20) **Armstrong-Altrin, J.S.** (2009). Provenance of sands from Cazonas, Acapulco, and Bahía Kino beaches, Mexico. *Revista Mexicana de Ciencias Geológicas*, vol. 26(3), pp. 764-782 (SCI Impact Factor 2022: 1.06 Q4; *Citas Google Scholar* = 193; *Scopus* = 138). ISSN PRINT: 1026-8774. DOI: <http://www.rmcb.unam.mx/index.php/rmcb/article/view/346>
- 21) Madhavaraju, J., González-León, C.M., Lee, Y.I., **Armstrong-Altrin, J.S.**, *Reyes-Campero, L.A.* * (2010). Geochemistry of the Mural Formation (Aptian-Albian) of the Bisbee Group, Northern Sonora, Mexico. *Cretaceous Research* vol. 31(4), pp. 400-414 (SCI Impact Factor 2022: 2.1 Q1; *Citas Google Scholar* = 80; *Scopus* = 59). * *Mi estudiante de licenciatura*
ISSN PRINT: 0195-6671; ISSN ELECTRONIC: 1095-998X; DOI: <https://doi.org/10.1016/j.cretres.2010.05.006>.

- 22) Bakkiaraj, D., Nagendra, R., Nagarajan, R. and **Armstrong-Altrin, J.S.** (2010). Geochemistry of sandstones from the Upper Cretaceous Sillakkudi Formation, Cauvery Basin, Southern India: Implication for provenance. *Journal of the Geological Society of India* vol. 76, pp. 453-467 (**SCI Impact Factor 2022: 1.3 Q4; Citas Google Scholar = 82; Scopus = 57**). ISSN PRINT: 0016-7622; ISSN ELECTRONIC: 0974-6889; DOI: <https://doi.org/10.1007/s12594-010-0128-3>.
- 23) **Armstrong-Altrin, J.S.**, Madhavaraju, J., Sial, A.N., Kasper-Zubillaga, J.J., Nagarajan, R., Flores-Castro, K. and *Rodríguez, J.L.** (2011). Petrography and stable isotope geochemistry of the Cretaceous El Abra limestones (Actopan), Mexico: Implication on diagenesis. *Journal of the Geological Society of India*, vol. 77, pp. 349-359 (**SCI Impact Factor 2022: 1.3 Q4; Citas Google Scholar = 59; Scopus = 38**). * *Mi estudiante de licenciatura*
DOI: <https://doi.org/10.1007/s12594-011-0042-3>.
- 24) Nagarajan, R., Madhavaraju, J., **Armstrong-Altrin, J.S.** and Nagendra, R. (2011). Geochemistry of Neoproterozoic limestones of Shahabad Formation, Bhima basin, Karnataka, southern India. *Geosciences Journal*, vol. 15(1), pp. 9-25 (**SCI Impact Factor 2022: 1.2 Q4; Citas Google Scholar = 123; Scopus = 86**). ISSN PRINT: 1226-4806; DOI: <https://doi.org/10.1007/s12303-011-0005-0>.
- 25) Nagendra, R., Nagarajan, R., Bakkiaraj, D., **Armstrong-Altrin, J.S.** (2011). Depositional and Post-depositional setting of Maastrichtian limestone, Ariyalur Group, Cauvery Basin, South India: a geochemical appraisal. *Carbonates and Evaporites*, vol. 26(2), pp. 127-147 (**SCI Impact Factor 2022: 1.4 Q3; Citas Google Scholar = 26; Scopus = 18**). ISSN PRINT: 0891-2556; DOI: <https://doi.org/10.1007/s13146-010-0041-2>.
- 26) Chakrabarti, G., Shome, D., Ghosh, S., **Armstrong-Altrin, J.S.** and Sial, A.N. (2011). Carbon and oxygen isotopic variations in stromatolitic dolomites of Palaeoproterozoic Vempalle Formation, Cuddapah Basin, India. *Carbonates and Evaporites*, vol. 26(2), pp. 181-191 (**SCI Impact Factor 2022: 1.4 Q3; Citas Google Scholar = 18; Scopus = 15**). ISSN PRINT: 0891-2556; DOI: <https://doi.org/10.1007/s13146-011-0054-5>.
- 27) Etemad-Saeed, N., Hosseini-Barzi, M., **Armstrong-Altrin, J.S.** (2011). Petrography and geochemistry of clastic sedimentary rocks as evidences for provenance of the Lower Cambrian Lalun Formation, Posht-e-badam block, Central Iran. *Journal of African Earth Sciences*, vol. 61(2), pp. 142-159 (**SCI Impact Factor 2022: 2.3 Q3; Citas Google Scholar = 147; Scopus = 105**). ISSN PRINT: 1464-343X; DOI: <https://doi.org/10.1016/j.jafrearsci.2011.06.003>.
- 28) **Armstrong-Altrin, J.S.**, Lee, Y.I., Kasper-Zubillaga, J.J., Carranza-Edwards, A., Garcia, D., Eby, N., Balaram, V., *Cruz-Ortiz, N.L.** (2012). Geochemistry of beach sands along the western Gulf of Mexico, Mexico: Implication for

- provenance. *Chemie der Erde / Geochemistry*, vol. 72(4), pp. 345-362 (**SCI Impact Factor 2022: 3.7 Q2**; **Citas Google Scholar = 203**; **Scopus = 153**). * *Mi estudiante de licenciatura*
ISSN PRINT: 0009-2819; DOI: <https://doi.org/10.1016/j.chemer.2012.07.003>.
Included in the most cited article list in Chemie der Erde Geochemistry (no. 1) from 2014-2016.
- 29) Chakrabarti, G., Shome, D., Kumar, S., **Armstrong-Altrin, J.S.**, Sial, A.N. (2013). Chemostratigraphy of carbonate succession of the Vempalle Formation, Cuddapah basin, India: a stratigraphic record of terminal Palaeoproterozoic ocean-atmosphere-biosphere system. *Carpathian Journal of Earth and Environmental Sciences*, vol. 8(1), pp. 71-80 (**SCI Impact Factor 2022: 1.2 Q4**; **Citas Google Scholar = 5**; **Scopus = 4**). ISSN PRINT: 1842-4090; ISSN ELECTRONIC: 1844-489X.
- 30) Nagarajan, R., **Armstrong-Altrin, J.S.**, Sial, A.N., Nagendra, R. Ellam, R.M. (2013). Carbon, oxygen, and strontium isotope geochemistry of the Proterozoic carbonate rocks, Bhima Basin, South India: implication for diagenesis. *Carpathian Journal of Earth and Environmental Sciences*, vol. 8(2), pp. 25-38 (**SCI Impact Factor 2022: 1.2 Q4**; **Citas Google Scholar = 11**; **Scopus = 9**). ISSN PRINT: 1842-4090; ISSN ELECTRONIC: 1844-489X.
- 31) **Armstrong-Altrin, J.S.**, Nagarajan, R., Madhavaraju, J., Rosales-Hoz, L., Lee, Y.I., Balaram, V., *Cruz-Martinez, A**, *Avila-Ramirez, G**. (2013). Geochemistry of the Jurassic and Upper Cretaceous shales from the Molango Region, Hidalgo, eastern Mexico: Implications for source-area weathering, provenance, and tectonic setting. *Comptes Rendus Geoscience*, vol. 345(4), pp. 185-202 (**SCI Impact Factor 2022: 1.4 Q4**; **Citas Google Scholar = 192**; **Scopus = 144**). * *Mis estudiantes de licenciatura* ISSN PRINT: 1631-0713;
DOI: <https://doi.org/10.1016/j.crte.2013.03.004>
Included in the most cited article list in Comptes Rendus Geosciences from 2014-2018 and I received an award.
- 32) Verma, S.P., **Armstrong-Altrin, J.S.** (2013). New multi-dimensional diagrams for tectonic discrimination of siliciclastic sediments and their application to Precambrian basins. *Chemical Geology*, vol. 355 (4), pp. 117-133 (**SCI Impact Factor 2022: 3.9 Q1**; **Citas Google Scholar = 483**; **Scopus = 323**). ISSN PRINT: 0009-2541; DOI: <https://doi.org/10.1016/j.chemgeo.2013.07.014>.
Included in the most cited article list in Chemical Geology from 2015-2018.
- 33) Kasper-Zubillaga, J.J., **Armstrong-Altrin, J.S.**, Carranza-Edwards, A., Morton-Bermea, O., Lozano-Santa-Cruz, R. (2013). Control in beach and dune sands of the Gulf of Mexico and the role of nearby rivers. *International Journal of Geosciences*, vol. 4 (8), pp. 1157-1174 (**SCI Impact Factor: 0.26**; **Citas Google**

Scholar = 33). ISSN PRINT: 2156-8359; ISSN ELECTRONIC: 2156-8367; DIO:10.4236/IJG.2013.48110.

- 34) Hossain, H.M.Z., Tarek, M., Armstrong-Altrin, J.S., Monir, M.U., Ahmed, M.T., Ahmed, S.I. and Hernandez-Coronado, C.J. * (2014). Microtextures of detrital sand grains from the Cox's Bazar beach, Bangladesh: Implications for provenance and depositional environment. *Carpathian Journal of Earth and Environmental Sciences*, vol. 9(3), pp. 187-197 (SCI Impact Factor 2022: 1.2 Q4; Citas Google Scholar = 23; Scopus = 12). * *Mi estudiante de maestria*; ISSN PRINT: 1842-4090; ISSN ELECTRONIC: 1844-489X.
- 35) Armstrong-Altrin, J.S., Nagarajan, R., Lee, Y.I., Kasper-Zubillaga, J.J., Córdoba-Saldaña, L.P.* (2014). Geochemistry of sands along the San Nicolás and San Carlos beaches, Gulf of California, Mexico: implications for provenance and tectonic setting. *Turkish Journal of Earth Sciences*, vol. 23(5), pp. 533-558 (SCI Impact Factor 2022: 1 Q4; Citas Google Scholar = 141; Scopus = 105).* *Mi estudiante de maestria* ISSN PRINT: 1300-0985; DOI: 10.3906/yer-1309-21.
- 36) Armstrong-Altrin, J.S., Natalhy-Pineda, O.* (2014). Microtextures of detrital sand grains from the Tecolutla, Nautla, and Veracruz beaches, western Gulf of Mexico, Mexico: implications for depositional environment and palaeoclimate. *Arabian Journal of Geosciences*, vol. 7(10), pp. 4321-4333 (SCI Impact Factor 2020: 1.827 Q3; Citas Google Scholar = 63; Scopus = 44).* *Mi estudiante de maestria* ISSN PRINT: 1866-7511; ISSN ELECTRONIC: 1866-7583; DOI: <https://doi.org/10.1007/s12517-013-1088-x>.
- 37) Kasper-Zubillaga, J.J., Armstrong-Altrin, J.S., Rosales-Hoz, L. (2014) Geochemical study of coral skeletons from the Puerto Morelos Reef, southeastern Mexico. *Estuarine, Coastal and Shelf Science*, vol. 151, pp. 78-87 (SCI Impact Factor 2022: 2.8 Q1; Citas Google Scholar = 9; Scopus = 4). ISSN PRINT: 0272-7714; ISSN ELECTRONIC: 1096-0015; DOI: <https://doi.org/10.1016/j.ecss.2014.09.023>.
- 38) Armstrong-Altrin, J.S. (2015). Evaluation of two multidimensional discrimination diagrams from beach and deep-sea sediments from the Gulf of Mexico and their application to Precambrian clastic sedimentary rocks. *International Geology Review*, vol. 57(11-12), pp. 1446-1461 (SCI Impact Factor 2022: 2.6 Q1; Citas Google Scholar = 164; Scopus = 128). ISSN PRINT: 0020-6814; ISSN ELECTRONIC: 1938-2839; DOI: <https://doi.org/10.1080/00206814.2014.936055>.
- 39) Armstrong-Altrin, J.S., Machain-Castillo, M.L., Rosales-Hoz, L., Carranza-Edwards, A., Sanchez-Cabeza, J.A., Ruíz-Fernández, A.C. (2015). Provenance and depositional history of continental slope sediments in the Southwestern Gulf

- of Mexico unraveled by geochemical analysis. *Continental Shelf Research*, vol. 95, pp. 15-26 (**SCI Impact Factor 2022: 2.3 Q2**; **Citas Google Scholar = 221**; **Scopus = 186**). DOI: <https://doi.org/10.1016/j.csr.2015.01.003>.
Included in the most cited article list in Continental Shelf Research -2017-2018.
- 40) Nagarajan, R., **Armstrong-Altrin, J.S.**, Kessler, F.L., *Hidalgo-Moral, E.L.*,* Dodge-Wan, D., Taib, N.I. (2015). Provenance and tectonic setting of Miocene siliciclastic sediments, Sibuti formation, northwestern Borneo. *Arabian Journal of Geosciences*, vol. 8(10), pp. 8549-8565 (**SCI Impact Factor 2020: 1.827 Q3**; **Citas Google Scholar = 83**; **Scopus = 66**). * *Mi estudiante de maestria*; ISSN PRINT: 1866-7511; ISSN ELECTRONIC: 1866-7538; DOI: <https://doi.org/10.1007/s12517-015-1833-4>.
- 41) Rosales-Hoz, L., Carranza-Edwards, A., Martínez-Serrano, R., Alatorre, M.A., **Armstrong-Altrin, J.S.** (2015). Textural and geochemical characteristics of marine sediments in the SW Gulf of Mexico: Implications for source and seasonal change. *Environmental Monitoring and Assessment*, vol. 187(4):205, pp. 1-19. DOI 10.1007/s10661-015-4423-8 (**SCI Impact Factor 2022: 3 Q3**; **Citas Google Scholar = 15**; **Scopus = 13**). ISSN PRINT: 0167-6369; ISSN ELECTRONIC: 1573-2959; DOI: <https://doi.org/10.1007/s10661-015-4423-8>
URL: <https://link.springer.com/article/10.1007/s10661-015-4423-8>
- 42) **Armstrong-Altrin, J.S.**, Nagarajan, R., Balaram, V., *Natalhy-Pineda, O.** (2015). Petrography and geochemistry of sands from the Chachalacas and Veracruz beach areas, western Gulf of Mexico, Mexico: constraints on provenance and tectonic setting. *Journal of South American Earth Sciences*, vol. 64(1), pp. 199-216 (**SCI Impact Factor 2022: 1.8 Q3**; **Citas Google Scholar = 165**; **Scopus = 126**). * *Mi estudiante de maestria* ISSN PRINT: 0895-9811
DOI: <https://doi.org/10.1016/j.jsames.2015.10.012>
Included in the most cited article list in the “Journal of South American Earth Sciences” - 2017-2018.
- 43) Verma, S.P., Díaz-González, L., **Armstrong-Altrin, J.S.** (2016). Application of a new computer program for tectonic discrimination of Cambrian to Holocene clastic sediments. *Earth Science Informatics*, vol. 9(2), pp. 151-165 (**SCI Impact Factor 2022: 2.8 Q2**; **Citas Google Scholar = 40**; **Scopus = 28**). ISSN PRINT: 1865-0473; DOI: <https://doi.org/10.1007/s12145-015-0244-0>.
- 44) Verma, S.P., **Armstrong-Altrin, J.S.** (2016). Geochemical discrimination of siliciclastic sediments from active and passive margin settings. *Sedimentary Geology*, vol. 332, pp. 1-12 (**SCI Impact Factor 2022: 2.8 Q1**; **Citas Google Scholar = 225**; **Scopus = 160**). ISSN PRINT: 0037-0738; ISSN: 1879-0968 DOI: <https://doi.org/10.1016/j.sedgeo.2015.11.011>
Included in the most cited article list in “Sedimentary Geology” - 2017-2018.

- 45) Cabrera-Ramírez, M.A., Carranza-Edwards, A., **Armstrong-Altrin, J.S.**, Rosales-Hoz, L. (2016). Geochemistry of pelagic sediments and nodules in the abyssal Clarion Fracture Zone, Western Mexico. *Carpathian Journal of Earth and Environmental Sciences*, vol. 11 (2), pp. 437-448 (SCI Impact Factor 2022: 1.2 Q4). ISSN PRINT: 1842-4090; ISSN ELECTRONIC: 1844-489X.
- 46) **Armstrong-Altrin, J.S.**, Machain-Castillo, M.L. (2016). Mineralogy, geochemistry, and radiocarbon ages of deep sea sediments from the Gulf of Mexico, Mexico. *Journal of South American Earth Sciences*, vol. 71, pp. 182-200 (SCI Impact Factor 2022: 1.8 Q3; Citas Google Scholar = 103; Scopus = 84). ISSN PRINT: 0895-9811; <https://doi.org/10.1016/j.jsames.2016.07.010>.
- 47) Tawfik, H.A., Ghandour, I.M., Maejima, W., **Armstrong-Altrin, J.S.**, Abdel-Hameed, A-M. T. (2017). Petrography and geochemistry of the siliciclastic Araba Formation (Cambrian), east Sinai, Egypt: Implications for provenance, tectonic setting and source weathering. *Geological Magazine*, vol. 154(1), pp. 1-23. (SCI Impact Factor 2022: 2.3 Q3; Citas Google Scholar = 73; Scopus = 57). ISSN PRINT: 0016-7568; DOI: <https://doi.org/10.1017/S0016756815000771>.
- 48) Verma, S.P., *Rivera-Gómez, M.A.**, Díaz-González, L., Pandarinath, K., Amezcua-Valdez, A., Rosales-Rivera, M., Verma, S.K., Quiroz-Ruiz, A, and **Armstrong-Altrin, J.S.** (2017). Multidimensional classification of magma types for altered igneous rocks and application to their tectonomagmatic discrimination and igneous provenance of siliciclastic sediments. *Lithos*, vol. 278-281, pp. 321-330 (SCI Impact Factor 2022: 3.5 Q1; Citas Google Scholar = 35; Scopus = 23); ISSN PRINT: 0024-4937; DOI: <https://doi.org/10.1016/j.lithos.2017.02.005>.
* *mi alumna de posdoctorado - BECARIO DGAPA 2018*.
- 49) Kasper-Zubillaga, J.J., Arellano-Torres, E., **Armstrong-Altrin, J.S.**, Sial, A.N. (2017). A study of carbonate beach sands from the Yucatan Peninsula, Mexico: a case study. *Carbonates and Evaporites*, vol. 32(1), pp. 1-12. DOI 10.1007/s13146-015-028-0 (SCI Impact Factor 2022: 1.4 Q3; Citas Google Scholar = 11; Scopus = 8). ISSN PRINT: 0891-2556; DOI: <https://doi.org/10.1007/s13146-015-0283-0>.
- 50) *Ramos-Vázquez, M.A.**, **Armstrong-Altrin, J.S.**, Rosales-Hoz, L., Machain-Castillo, M.L., and Carranza-Edwards, A. (2017). Geochemistry of deep-sea sediments in two cores retrieved at the mouth of the Coatzacoalcos river delta, western Gulf of Mexico, Mexico. *Arabian Journal of Geosciences*, vol. 10(6):148 pp. 1-19 (SCI Impact Factor 2020: 1.827; Citas Google Scholar = 80; Scopus = 66). * *Mi estudiante de doctorado* ISSN PRINT: 1866-7511; ISSN ELECTRONIC: 1866-7538; DOI: <https://doi.org/10.1007/s12517-017-2934-z>.

- 51) *Tapia-Fernandez, H.J**, **Armstrong-Altrin, J.S.**, Selvaraj, K. (2017). Geochemistry and U-Pb geochronology of detrital zircons in the Brujas beach sands, Campeche, Southwestern Gulf of Mexico, Mexico. *Journal of South American Earth Sciences*, vol. 76, pp. 346-361 (SCI Impact Factor 2022: 1.8 Q3; Citas Google Scholar = 69; Scopus = 55) * *Mi estudiante de doctorado* ISSN PRINT: 0895-9811; DOI: <https://doi.org/10.1016/j.jsames.2017.04.003>. **RECEIVED MOST CITED ARTICLE AWARD 2018-2019.**
- 52) **Armstrong-Altrin, J.S.**, Lee, Y.I., Kasper-Zubillaga, J.J., *Trejo-Ramírez, E.** (2017). Mineralogy and geochemistry of sands along the Manzanillo and El Carrizal beach areas, southern Mexico: implications for palaeoweathering, provenance, and tectonic setting. *Geological Journal*, vol. 52(4), pp. 559-582 (SCI Impact Factor 2022: 1.8 Q3; Citas Google Scholar = 160; Scopus = 125). * *Mi estudiante de licenciatura* ISSN ELECTRONIC: 1099-1034 ISSN PRINT: 0072-1050; DOI: <https://doi.org/10.1002/gj.2792>. **RECEIVED MOST CITED ARTICLE AWARD 2018-2019.**
- 53) *Hernández-Hinojosa, V**, Montiel-García, P.C., **Armstrong-Altrin, J.S.**, Nagarajan, R., Kasper-Zubillaga, J.J. (2018). Textural and geochemical characteristics of beach sands along the western Gulf of Mexico, Mexico. *Carpathian Journal of Earth and Environmental Sciences*, vol. 13(1), pp. 161-174 (SCI Impact Factor 2022: 1.2 Q4; Citas Google Scholar = 86; Scopus = 69). * *Mi estudiante de licenciatura*; DOI:10.26471/cjees/2018/013/015; ISSN PRINT: 1842-4090; ISSN ELECTRONIC: 1844-489X. **RECEIVED MOST CITED ARTICLE RECOGNITION 2018-2019.**
- 54) *Anaya-Gregorio, A**, **Armstrong-Altrin, J.S.**, Machain-Castillo, M.L., Montiel-García, P.C., *Ramos-Vázquez, M.A.*** (2018). Textural and geochemical characteristics of late Pleistocene to Holocene fine-grained deep-sea sediment cores (GM6 and GM7), recovered from southwestern Gulf of Mexico. *Journal of Palaeogeography*, 7 (3), pp. 253-271. <http://doi.org/10.1186/s42501-018-0005-3> (SCI Impact Factor 2022: 2.9 Q1; Citas Google Scholar = 21; Scopus 68), * *Mi estudiante de licenciatura*; ** *Mi estudiante de doctorado*; ISSN PRINT: 2095-3836. **RECEIVED MOST CITED ARTICLE RECOGNITION 2018-2019.**
- 55) Tawfik, H.A., Salah, M.K., Maejima, W., **Armstrong-Altrin, J.S.**, Abdel-Hameed, A-M.T., Ghandour M.M.E. (2018). Petrography and geochemistry of the Lower Miocene Moghra sandstones, Qattara Depression, north Western Desert, Egypt. *Geological Journal*, vol. 53(5), pp. 1938-1953 (SCI Impact Factor 2022: 1.8 Q3; Citas Google Scholar = 52; Scopus = 33). ISSN PRINT: 0072-1050; ISSN ELECTRONIC: 1099-1034; DOI: <https://doi.org/10.1002/gj.3025>.
- 56) Wang, Z., Wang, J., Fu, X., Zhan, W., **Armstrong-Altrin, J.S.**, Yu, F., Feng, X., Song, C., Zeng, S. (2018). Geochemistry of the Upper Triassic black mudstones in

- the Qiangtang Basin, Tibet: Implications for paleoenvironment, provenance, and tectonic setting. *Journal of Asian Earth Sciences*, vol. 160, pp. 118-135 (SCI Impact Factor 2022: 3 Q2; Citas Google Scholar = 41; Scopus = 36). ISSN PRINT: 1367-9120. ISSN Electronic: 1878-5786; DOI: doi.org/10.1016/j.jseaes.2018.04.022
- 57) Ramos-Vázquez, M.A*, Armstrong-Altrin, J.S., Machain-Castillo, M.L., Gío-Argáez, F.R. (2018). Foraminiferal assemblages, ¹⁴C ages, and compositional variations in two sediment cores in the western Gulf of Mexico. *Journal of South American Earth Sciences*, vol. 88, pp. 480-496. <http://doi.org/10.1016/j.jsames.2018.08.025> (SCI Impact Factor 2022: 1.8 Q3; Citas Google Scholar = 44; Scopus = 36). ISSN PRINT: 0895-9811
* **Mi estudiante de doctorado RECEIVED MOST CITED ARTICLE AWARD 2018-2019.**
- 58) Armstrong-Altrin, J.S., Ramos-Vázquez, M.A*, Zavala-León, A.C**, Montiel-García, P.C. (2018). Provenance discrimination between Atasta and Alvarado beach sands, western Gulf of Mexico, Mexico: Constraints from detrital zircon chemistry and U-Pb geochronology. *Geological Journal*, vol. 53(6), pp. 2824-2848 (SCI Impact Factor 2022: 1.8 Q3; Citas Google Scholar = 90; Scopus = 76). * **Mi estudiante de doctorado**; ** **Mi estudiante de licenciatura**
ISSN PRINT: 0072-1050; ISSN ELECTRONIC: 1099-1034; <https://doi.org/10.1002/gj.3122>. **RECEIVED MOST CITED ARTICLE AWARD 2018-2019.**
- 59) Taheri, A., Jafarzadeh, M., Armstrong-Altrin, J.S., Mirbagheri, S.R. (2018). Geochemistry of siliciclastic rocks from the Shemshak Group (Upper Triassic-Lower-Middle Jurassic), northeastern Alborz, northern Iran: implications for palaeoweathering, provenance, and tectonic setting. *Geological Quarterly*, vol. 62(3), pp. 522-535 (SCI Impact Factor 2022: 1 Q4; Citas Google Scholar = 10; Scopus = 10), ISSN PRINT: 1641-7291; DOI: <http://dx.doi.org/10.7306/gq.1433>.
- 60) Verma, S.P., Verma, S.K., Rivera-Gómez, M.A*, Torres-Sánchez, D., Díaz-González, L., Amezcua-Valdez, A., Rivera-Escoto, B.A., Rosales-Rivera, M., Armstrong-Altrin, J.S., López-Loera, H., Velasco-Tapia, F., Pandarinath, K. (2018). Statistically coherent calibration of X-ray fluorescence spectrometry for major elements in rocks and minerals. *Journal of Spectroscopy* Article ID: 5837214, <https://doi.org/10.1155/2018/5837214> (SCI Impact Factor 2022: 2 Q3; Citas Google Scholar = 29; Scopus = 17), ISSN: 1097-4539 * **mi alumna de posdoctorado BECARIA DGAPA 2018.**
- 61) Wang, Z., Wang, J., Fu, X., Feng, X., Armstrong-Altrin, J.S., Zhan, W., Wan, Y., Song, C., Ma, L., Shen, L. (2019). Sedimentary successions and onset of the Mesozoic Qiangtang rift basin (northern Tibet), Southwest China: Insights on the

- Paleo- and Meso-Tethys evolution. *Marine and Petroleum Geology*, vol. 102, pp. 657-679 (**SCI Impact Factor 2022: 4.2**; **Citas Google Scholar = 18**; **Scopus = 18**) DOI: <https://doi.org/10.1016/j.marpetgeo.2019.01.017>; ISSN PRINT: 0264-8172.
- 62) Kasper-Zubillaga, J.J., Arellano-Torres, E., **Armstrong-Altrin, J.S.** (2019). Physical degradation and early diagenesis in foraminiferal tests after subaerial exposure in terrigenous-depleted beaches of Yucatan, Mexico. *Carbonates and Evaporites*, vol. 34, pp. 1175-1189 (**SCI Impact Factor 2022: 1.4 Q1**; **Citas Google Scholar = 8**; **Scopus = 6**). DOI: <https://doi.org/10.1007/s13146-019-00485-4>, ISSN PRINT: 0891-2556; ISSN ELECTRONIC: 1878-5212.
- 63) **Ramos-Vázquez, M.A.***, **Armstrong-Altrin, J.S.** (2019). Sediment chemistry and detrital zircon record in the Bosque and Paseo del Mar coastal areas from the southwestern Gulf of Mexico. *Marine and Petroleum Geology*, vol. 110, 650-675 (**SCI Impact Factor 2022: 4.2 Q1**; **Citas Google Scholar = 73**; **Scopus = 58**), ISSN PRINT: 0264-8172; ISSN ELECTRONIC: 1873-4073. DOI: <https://doi.org/10.1016/j.marpetgeo.2019.07.032>. * *mi alumna de doctorado*. **RECEIVED MOST CITED ARTICLE AWARD 2021.**
- 64) **Armstrong-Altrin, J.S.**, Botello, A.V., Villanueva, S.F., Soto, L.A. (2019). Geochemistry of surface sediments from the northwestern Gulf of Mexico: implications for provenance and heavy metal contamination. *Geological Quarterly*, vol. 63(3), pp. 522-538 (**SCI Impact Factor 2022: 1 Q4**; **Citas Google Scholar = 70**; **Scopus = 63**), ISSN PRINT: 1641-7291; ISSN ELECTRONIC: 1641-7291. DOI: <http://dx.doi.org/10.7306/gq.1484>
- 65) Udayanapillai, A.V., Perumal, V., **Armstrong-Altrin, J.S.** (2020). Provenance, weathering, tectonic setting and palaeo-oxygenation condition of the Cretaceous calcareous grey shale (CGS) from the Kallakudi Dalmia limestone quarry no: II, Uttatur group, Trichinopoly, Tamilnadu, India. *Himalayan Geology*, 41(1), 11-20 (**SCI Impact Factor 2022: 1.2**; **Citas Scopus = 3**). ISSN PRINT: 0971-8966: URL: https://www.himgeology.com/volume_abstract.php?abstract=906
- 66) Hossain, H.M.Z., **Armstrong-Altrin, J.S.**, Jamil, A.H.M.N., Rahman, M.M., **Hernández-Coronado, C.J.*** and **Ramos-Vázquez, M.A.**** (2020). Microtextures on quartz grains in the Kuakata beach, Bangladesh: implications for provenance and depositional environment. *Arabian Journal of Geosciences*, 13(7), 291. DOI.ORG/10.1007/s12517-020-5265-4 (**SCI Impact Factor 2020: 1.827**; **Citas Google Scholar = 17**; **Scopus = 13**). ISSN PRINT: 1866-7511; ISSN ELECTRONIC: 1866-7538. URL: <https://link.springer.com/article/10.1007/s12517-020-5265-4>
* *mi alumna de maestria*; ** *mi alumna de doctorado*.

- 67) [Rivera-Gómez, M.A*](#), [Armstrong-Altrin, J.S.](#), Verma, S.P., Díaz-González, L. (2020). APMDisc: An online computer program for the geochemical discrimination of siliciclastic sediments from active and passive margins. *Turkish Journal of Earth Sciences*, 29(3), 550-578 (SCI Impact Factor 2022: 1.0; [Citas Google Scholar = 19](#); [Scopus = 12](#)). ISSN: 1300-0985; ISSN ELECTRONIC: 1303-619X; DOI:10.3906/yer-1908-15. URL: <https://journals.tubitak.gov.tr/earth/vol29/iss3/9/> *mi alumna de posdoctorado **BECARIA DGAPA 2018-2019**.
- 68) Celis-Hernandez, O., Giron-Garcia, M.P., Ontiveros-Cuadras, J.F., Canales-Delgadillo, J.C., Pérez-Ceballos, R.Y., Ward, R.D., Acevedo-Gonzales, O., [Armstrong-Altrin, J.S.](#), Merino-Ibarra, M. (2020). Environmental risk of trace elements in mangrove ecosystems: An assessment of natural vs oil and urban inputs. *Science of the Total Environment*, 730, 138643 (SCI Impact Factor 2022: 9.8; [Citas Google Scholar = 33](#); [Scopus = 29](#)). <https://doi.org/10.1016/j.scitotenv.2020.138643>. URL: <https://www.sciencedirect.com/science/article/abs/pii/S0048969720321598> ISSN PRINT: 0048-9697; ISSN ELECTRONIC: 1879-9697.
- 69) Mejía-Ledezma, R.O., Kasper-Zubillaga, J.J., Alvarez-Sánchez, L.F., Mendieta-Lora, M., Arellano-Torres, E., Tetlalmatzi-Martínez, J.L., Gonzalez Bermúdez, A., Patiño-Andrade, D., [Armstrong-Altrin, J.S.](#) (2020). Surface textures of quartz and ilmenite grains from dune and beach sands of the Gulf of Mexico Coast, Mexico: implications for fluvial, aeolian and marine transport. *Aeolian Research*, 45, 100611. DOI.ORG/10.1016/j.aeolia.2020.100611 (SCI Impact Factor 2022: 3.3; [Citas Google Scholar = 13](#)). URL: <https://www.sciencedirect.com/science/article/abs/pii/S1875963720300628> ISSN PRINT: 1875-9637; ISSN ELECTRONIC: 2212-1684.
- 70) [Armstrong-Altrin, J.S.](#) (2020). Detrital zircon U-Pb geochronology and geochemistry of the Riachuelos and Palma Sola beach sediments, Veracruz State, Gulf of Mexico: a new insight on palaeoenvironment. *Journal of Palaeogeography*, vol. 9 (4), 28 DOI: <https://doi.org/10.1186/s42501-020-00075-9>; (SCI Impact Factor 2022: 2.9; [Citas Google Scholar = 83](#); [Scopus = 57](#)). <https://doi.org/10.1186/s42501-020-00075-9>. ISSN PRINT: 2095-3836. **INCLUDED IN THE MOST CITED ARTICLE LIST 2018-2019**
- 71) [Ramos-Vázquez, M.A*](#), [Armstrong-Altrin, J.S.](#) (2020). Provenance and palaeoenvironmental significance of microtextures in quartz and zircon grains from the Paseo del Mar and Bosque beaches, Gulf of Mexico. *Journal of Earth System Science*, 129(1), 225 <https://doi.org/10.1007/s12040-020-01491-0> (SCI Impact Factor 2022: 1.9; [Citas Google Scholar = 20](#); [Scopus = 18](#)). * mi alumna de doctorado; <https://doi.org/10.1007/s12040-020-01491-0>. ISSN ELECTRONIC: 0973-774X.

- 72) Doum, J.M., Fuh, G.C., Fadil-Djenabou, S., Onana, V.L., Ndjigui, P-D., **Armstrong-Altrin, J.S.** (2020). Characterization and potential application of gleysols and ferralsols for ceramic industry: a case study from Dimaki (Eastern Cameroon). *Arabian Journal of Geosciences*, 13(20):1074. <https://doi.org/10.1007/s12517-020-06007-0> (SCI Impact Factor 2020: 1.827; **Citas Google Scholar = 5; Scopus = 3**). ISSN PRINT: 1866-7511; ISSN ELECTRONIC: 1866-7538. URL: <https://link.springer.com/article/10.1007/s12517-020-06007-0>
- 73) Ekoa Bessa, A.Z*., Nguetchoua, G., Janpou, A. K., El-Amier, Y.A., Nguetnga, O.N.N.M., Kayou, U.R., Bisse, S. B., Mapuna, E.C.N., **Armstrong-Altrin, J.S.** (2021). Heavy metal contamination and its ecological risks in the beach sediments along the Atlantic Ocean (Limbe coastal fringes, Cameroon). *Earth Systems and Environment*, 5, 433-444 <https://doi.org/10.1007/s41748-020-00167-5>. (SCI Impact Factor 2022: 7.2 Q1; **Citas Google Scholar = 63; Scopus = 50**) ISSN **2509-9434**. ISSN PRINT: 2509-9426; ISSN ELECTRONIC: 2509-9434. URL: <https://link.springer.com/article/10.1007/s41748-020-00167-5>
* *mi estudiante de doctorado*
- 74) **Armstrong-Altrin, J.S.**, *Ramos-Vázquez, M.A**, *Hermenegildo-Ruiz, N.Y***., Madhavaraju, J. (2021). Microtexture and U-Pb geochronology of detrital zircon grains in the Chachalacas beach, Veracruz State, Gulf of Mexico. *Geological Journal*, 56 (5), 2418-2438. DOI:10.1002/gj.3984 (SCI Impact Factor 2022: 1.8 Q3; **Citas Google Scholar = 53; Scopus = 38**). **mi alumna de doctorado; ** mi alumna de licenciatura*. ISSN ELECTRONIC: 1099-1034. **INCLUDED IN THE MOST CITED ARTICLE LIST 2021**. <https://doi.org/10.1002/gj.3984>. URL: <https://onlinelibrary.wiley.com/doi/abs/10.1002/gj.3984>
- 75) Madhavaraju, J., **Armstrong-Altrin, J.S.**, Pillai, R.B., Pi-Puig, T. (2021). Geochemistry of sands from the Huatabampo and Altata beaches. Gulf of California, Mexico. *Geological Journal*, 56, 2398-2417 <https://doi.org/10.1002/gj.3864>. (SCI Impact Factor 2022: 1.8 Q3; **Citas Google Scholar = 28; Scopus = 20**). ISSN ELECTRONIC: 1099-1034. URL: <https://onlinelibrary.wiley.com/doi/abs/10.1002/gj.3864>
- 76) Kettanah, Y.A., **Armstrong-Altrin, J.S.**, Mohammad, F. A. (2021). Petrography and geochemistry of siliciclastic rocks of the Middle Eocene Gercus Formation, northern Iraq: Implications for provenance and tectonic setting. *Geological Journal* 56, 2528-2549. <https://doi.org/10.1002/gj.3880> (SCI Impact Factor 2022: 1.8 Q3; **Citas Google Scholar = 24; Scopus = 20**). URL: <https://onlinelibrary.wiley.com/doi/abs/10.1002/gj.3880>
ISSN ELECTRONIC: 1099-1034.

- 77) *Ekoka Bessa, A. Z**, Paul-Désiré, N., Fuh, G.C., **Armstrong-Altrin, J.S.**, Betsi, T.B. (2021). Mineralogy and geochemistry of the Ossa lake Complex sediments, Southern Cameroon: Implications for paleoweathering and provenance. *Arabian Journal of Geosciences* 14, Article no. 322 (**SCI Impact Factor 2020: 1.827; Citas Google Scholar = 24; Scopus = 12**). ISSN PRINT: 1866-7511; ISSN ELECTRONIC: 1866-7538. <https://doi.org/10.1007/s12517-021-06591-9>
URL: <https://link.springer.com/article/10.1007/s12517-021-06591-9>
** mi estudiante de doctorado*
- 78) *Ayala-Pérez, M.P.**, **Armstrong-Altrin, J.S.**, Machain-Castillo, M.L. (2021). Heavy metal contamination and provenance of sediments recovered at the Grijalva River delta, southern Gulf of Mexico. *Journal of Earth System Science* 130 (88). <https://doi.org/10.1007/s12040-021-01570-w> (**SCI Impact Factor 2022: 1.9; Citas Google Scholar = 29; Citas Scopus = 24**). ** mi alumna de doctorado* URL: <https://link.springer.com/article/10.1007/s12040-021-01570-w>
ISSN ELECTRONIC: 0973-774X.
- 79) Ekoka Bessa, A.Z*, **Armstrong-Altrin, J.S.**, Fuh, G.C., Betsi, T.B., Kelepile, T. and Ndjigui, P-D. (2021). Mineralogy and geochemistry of the Ngaoundaba Crater Lake sediments, northern Cameroon: implications for provenance and trace metals status. *Acta Geochimica*, 40, 718-738. <https://doi.org/10.1007/s11631-021-00463-5> (**SCI Impact Factor 2022: 1.6; Citas Google Scholar = 10; Scopus = 6**). ** mi estudiante de doctorado* ISSN PRINT: 2096-0956; ISSN ELECTRONIC: 2365-7499. URL: <https://link.springer.com/article/10.1007/s11631-021-00463-5>
- 80) Hussain, S.H., Al-Juboury, A.I., Al-Haj, M.A., **Armstrong-Altrin, J.S.**, Al-Lhaebi, S.F. (2021). Mineralogy and geochemistry of the Late Triassic Baluti Formation, Northern Iraq. *Journal of African Earth Sciences* 181, 104243 <https://doi.org/10.1016/j.jafrearsci.2021.104243> (**SCI Impact Factor 2022: 2.3; Citas Google Scholar = 5; Scopus = 5**).
ISSN PRINT: 1464-343X; ISSN ELECTRONIC: 1879-1956.
URL: <https://www.sciencedirect.com/science/article/abs/pii/S1464343X21001448>
- 81) *Ramos-Vázquez, M.A**, **Armstrong-Altrin, J.S.** (2021). Microtextures on quartz and zircon grain surfaces in the Barra del Tordo and Tesoro beaches, northwestern Gulf of Mexico. *Arabian Journal of Geosciences* 14, Article no. 949 <http://doi.org/10.1007/s12517-021-07333-7> (**SCI Impact Factor 2020: 1.827; Citas Google Scholar = 14; Scopus = 10**). ** mi estudiante de doctorado*
ISSN PRINT: 1866-7511; ISSN ELECTRONIC: 1866-7538.
URL: <https://link.springer.com/article/10.1007/s12517-021-07333-7>
- 82) Madhavaraju, J., **Armstrong-Altrin, J.S.**, James, R.A. and Hussain, S.M. (2021). Palaeoenvironment and provenance signatures inferred from quartz grain Surface features: A case study from Huatabampu and Altata beaches, Gulf of California,

- Mexico. *Journal of South American Earth Sciences*, 111, 1-11, No.103441. <https://doi.org/10.1016/j.jsames.2021.103441> (SCI Impact Factor 2022: 1.8 Q3); *Citas Google Scholar = 5; Scopus = 2*).
ISSN PRINT: 0895-9811; ISSN ELECTRONIC: 1873-0943.
URL: <https://www.sciencedirect.com/science/article/abs/pii/S0895981121002881>
- 83) Chougong, D.T., *Ekoka Bessa, A.Z**, Ngueutchoua G., Yongue, R.F., Ntyam, S.C., **Armstrong-Altrin, J.S.** (2021). Mineralogy and geochemistry of Lobé River sediments, SW Cameroon: Implications for provenance and weathering. *Journal of African Earth Sciences* 183, 1-19 No. 104320 (SCI Impact Factor 2022: 2.3; *Citas Google Scholar = 17; Scopus = 13*) * *mi estudiante de doctorado* <https://doi.org/10.1016/j.jafrearsci.2021.104320>. ISSN PRINT: 1464-343X
URL: <https://www.sciencedirect.com/science/article/abs/pii/S1464343X21002211>
- 84) *Ramos-Vázquez, M.A**, **Armstrong-Altrin, J.S.** (2021). Provenance of sediments from Barra del Tordo and Tesoro beaches, Tamaulipas State, northwestern Gulf of Mexico. *Journal of Palaeogeography*, 10:20, 1-17. <https://doi.org/10.1186/s42501-021-00101-4> (SCI Impact Factor 2022: 2.9; *Citas Google Scholar = 37; Scopus = 21*). * *mi estudiante de doctorado*
ISSN PRINT: 2095-3836.
- 85) Mayra Deylhy Mapel-Hernández, **John S. Armstrong-Altrin***, Alfonso V. Botello, Fabiola Lango-Reynoso (2021). Bioavailability of Cd and Pb in sediments of the National Park Veracruz Reef System, Gulf of Mexico. *Applied Geochemistry*, 133, 1-10, article no. 105085 (SCI Impact Factor 2022: 3.4; *Citas Google Scholar = 7; Scopus = 7*). ISSN PRINT: 0883-2927; ISSN ELECTRONIC: 1872-9134. <https://doi.org/10.1016/j.apgeochem.2021.105085>
URL: <https://www.sciencedirect.com/science/article/abs/pii/S088329272100216X>
- 86) **Armstrong-Altrin, J.S.**, Madhavaraju, J., Vega-Bautista, F., *Ramos-Vázquez, M.A.*, Pérez-Alvarado, B.Y., Kasper-Zubillaga, J.J. and *Ekoka Bessa, A.Z**. (2021). Mineralogy and geochemistry of Tecolutla and Coatzacoalcos beach sediments, SW Gulf of Mexico. *Applied Geochemistry*, 134, 105103 (SCI Impact Factor 2022: 3.4). <https://doi.org/10.1016/j.apgeochem.2021.105103>. (*Citas Google Scholar = 47; Scopus = 19*). * *mi estudiante de doctorado*
ISSN PRINT: 0883-2927; ISSN ELECTRONIC: 1872-9134.
- 87) Chougong, D.T., Ngueutchoua, G., Dicka, E.H., *Ekoka Bessa, A.Z**, Ghepdeu, G.F.Y., Bilounga, U.J.F., Yongue, R.F., Ntyam, S.C., **Armstrong-Altrin, J.S.** (2022). Distributions of trace metals and radionuclides contamination in alluvial sediments from the Lobé River in Cameroon. *Earth Systems and Environment*, 6, 121-139 (SCI Impact Factor 2022: 7.2; *Citas Google Scholar = 10; Scopus = 2*), <https://doi.org/10.1007/s41748-021-00251-4>. * *mi estudiante de doctorado*
URL: <https://link.springer.com/article/10.1007/s41748-021-00251-4>

- 88) Ekoa Bessa, A.Z*, Ambassa Bela, V., Ngueutchoua, G., El-Amier, Y.A., Kamani, F.A., Ngueudong Zebaze, L., Kamguem Fotso, C.A., Njimanu Njong, V., Kemgang Ghomsi, F.E., Valipour, M., **Armstrong-Altrin, J.S.** (2022). Characteristics and Source Identification of Environmental Trace Metals in Beach Sediments Along the Littoral Zone of Cameroon. *Earth Systems and Environment* 6 (1), 175-187 (**SCI Impact Factor 2022: 7.2; Citas Google Scholar = 7; Scopus = 5**). <https://doi.org/10.1007/s41748-021-00279-6>. * *mi estudiante de doctorado*
- 89) Janpou, A.K., Ngueutchoua, G., *Ekoa Bessa, A.Z. **, **Armstrong-Altrin, J.S.**, Kayou, U.R.K., Odilia-Alexandra, N.N.M.N, Njanko, T., Bela, V.A., Tiotsop, M.S.K., Tankou, J.G. (2022). Composition, weathering, and provenance of beach sands adjacent to volcanic rocks in the northern Gulf of Guinea, SW Cameroon. *Journal of African Earth Sciences*, 188, article no. 104473 (**SCI Impact Factor 2022: 2.3; Citas Google Scholar = 9; Scopus = 7**). <https://doi.org/10.1016/j.jafrearsci.2022.104473> * *mi estudiante de doctorado*.
- 90) Subin, P.R., Ramasamy, S., **Armstrong-Altrin, J.S.**, Chandrasekar, T. (2022). The petrography and geochemistry of clastic rocks from the Upper Cretaceous Terani Formation of the Cauvery Basin, Southern India. *Geologica Carpathica* 73(1), 63-79 (**SCI Impact Factor 2022: 1.3**) (**Citas Google Scholar = 1; Scopus = 1**). <https://doi.org/10.31577/GeolCarp.73.1.4>
URL: <http://www.geologicacarpatica.com/browse-journal/volumes/73-1/article-999/>
- 91) Ramezani, F., Hosseini-Barzi, M., Honarmand, J., Sadeghi, A., **Armstrong-Altrin, J.S** (2022). Provenance of the Lower Cretaceous clastic rocks from the Gadvan Formation (Zagros Basin, Iran). Evidence from whole-rock geochemistry and petrography. *Geologica Carpathica* 73(1), 25-42 (**SCI Impact Factor 2022: 1.3; Citas Google Scholar = 1**). <https://doi.org/10.31577/GeolCarp.73.1.2>
ISSN PRINT: 1335-0552; ISSN ELECTRONIC: 1336-8052.
URL: <http://www.geologicacarpatica.com/browse-journal/volumes/73-1/article-997/>
- 92) **Armstrong-Altrin, J.S.**, Ramos-Vázquez, M.A., Nadia-Yutzi, H.R., Madhavaraju, J. (2022). Reply to the comments by Ramírez-Fernández et al. (DOI: 10.1002/gj.4266) on paper “Microtexture and U-Pb geochronology of detrital zircon grains in the Chachalacas beach, Veracruz State, Gulf of Mexico” by Armstrong-Altrin et al. (2021). *Geological Journal*, 57, 1346-1348. <https://doi.org/10.1002/gj.4424>. (**SCI Impact Factor 2022: 1.8**)
URL: <https://onlinelibrary.wiley.com/doi/abs/10.1002/gj.4424>
- 93) Victorine Ambassa Bela, *Armel Zacharie Ekoa Bessa**, Gabriel Ngueutchoua, Francis Aonsi Kamani, Mohamed Abioui, Annick Kwewouo Janpou, Marshall Leonel Ngueudong Zebaze, Archange Duviol Tsanga, **John S. Armstrong-Altrin**

- (2022). Petrography and geochemistry of beach sediments along the central coast of Cameroon: Constraints on provenance and tectonic setting. *Arabian Journal of Geosciences* 15:855 (SCI Impact Factor 2020: 1.827; *Citas Google Scholar* = 5; *Scopus* = 1) * *mi estudiante de doctorado*. <https://doi.org/10.1007/s12517-022-10114-5>
URL: <https://link.springer.com/article/10.1007/s12517-022-10114-5>
- 94) Madhavaraju, J., Armstrong-Altrin, J.S., Selvaraj, K., James, R.A. (2022). Microtextures on quartz grains from the Gulf of Mexico and the Mexican Pacific coastal sediments: Implications for sedimentary processes and depositional environment. *Journal of Palaeogeography*, 11(2): 257-275 (SCI Impact Factor 2022: 2.9) *Citas Google Scholar* = 4; *Scopus* = 2. <https://doi.org/10.1016/j.jop.2022.04.001>. ISSN PRINT: 2095-3836.
URL: <https://www.sciencedirect.com/science/article/pii/S2095383622000359>
- 95) Armstrong-Altrin, J.S., Ramos-Vázquez, M.A*., Madhavaraju, J., Marca-Castillo, M.E**., Machain-Castillo, M.L., Márquez-García, A.Z. (2022). Geochemistry of marine sediments adjacent to the Los Tuxtlas Volcanic Complex, Gulf of Mexico: Constraints on weathering and provenance. *Applied Geochemistry*, 141, no. 105321 (SCI Impact Factor 2022: 3.4 Q2) *Citas Google Scholar* = 29; *Scopus* = 13. <https://doi.org/10.1016/j.apgeochem.2022.105321>.
* *mi estudiante de doctorado*; ** *mi estudiante de doctorado* ISSN PRINT: 0883-2927; ISSN ELECTRONIC: 1872-9134.
URL: <https://www.sciencedirect.com/science/article/abs/pii/S0883292722001251>
- 96) Venu, U.A., Velmayil, P., Armstrong-Altrin, J.S., Sial, A., Manavalan, S. (2022). Geochemical and stable isotope ($\delta^{13}\text{C}$ & $\delta^{18}\text{O}$) signatures of calcrete in and around Pandalgudi, southern Tamilnadu, India and its implications on palaeoclimate. *Arabian Journal of Geosciences*, 15:913 (SCI Impact Factor 2020: 1.827). <https://doi.org/10.1007/s12517-022-10134-1>.
ISSN PRINT: 1866-7511; ISSN ELECTRONIC: 1866-7538.
URL: <https://link.springer.com/article/10.1007/s12517-022-10134-1>
- 97) Armstrong-Altrin, J.S., Ramos-Vázquez, M.A*., Madhavaraju, J., Verma, S.K., Macías-Martínez, K., Martínez-Ruíz, D. (2022). Quartz grain microtextures in the Boca del Cielo and Chocohuitl beaches in the Mexican Pacific, Chiapas state: implication on palaeoenvironment. *Arabian Journal of Geosciences*, 15:1086 (SCI Impact Factor 2020: 1.827) *Citas Google Scholar* = 5. * *mi estudiante de doctorado*. <https://doi.org/10.1007/s12517-022-10334-9>.
ISSN PRINT: 1866-7511; ISSN ELECTRONIC: 1866-7538.
URL: <https://link.springer.com/article/10.1007/s12517-022-10334-9>
- 98) Botello, A.V., Armstrong-Altrin, J.S., Villanueva, S.F., Velandia, L.A., Arellano, A.F. (2022). Evaluation of potentially toxic metal concentrations in the Terminos lagoon, Campeche, Gulf of Mexico. *Carpathian Journal of Earth and*

- Environmental Sciences* 17(2), 245-258. **Citas Google Scholar = 2; Scopus = 2 (SCI Impact Factor 2022: 1.2)**. DOI:10.26471/cjees/2022/017/218
ISSN PRINT: 1842-4090; ISSN ELECTRONIC: 1844-489X
URL: <https://www.cjees.ro/viewTopic.php?topicId=950>
- 99) Kamoun, M., Langer, M.R., Zaibi, C., Tlili, A., Mokni, A., **Armstrong-Altrin, J.S.**, Youssef, M.B. (2022). Geochemical and sedimentological constraints on palaeoclimate and paleoenvironment over the past 4000 years in the Thapsus coast, Tunisia. *Arabian Journal of Geosciences* 15, article number 1434, 1-18 (SCI Impact Factor 2020: 1.827). **Citas Google Scholar =1**. <https://doi.org/10.1007/s12517-022-10609-1>. ISSN PRINT: 1866-7511
URL: <https://link.springer.com/article/10.1007/s12517-022-10609-1>
- 100) Flores-Castro, M*., **Armstrong-Altrin, J.S.** (2022). Textural characteristics and abundance of microplastics in Tecolutla beach sediments, Gulf of Mexico. *Environmental Monitoring and Assessment* 194:752, 1-14 (SCI Impact Factor 2022: 3.0). * *mi estudiante de licenciatura* <https://doi.org/10.1007/s10661-022-10447-4> (Citas Google Scholar = 3; Scopus = 2)
URL: <https://link.springer.com/article/10.1007/s10661-022-10447-4>
- 101) Amin-Rasouli, H., Azizi, H., Asahara, Y., **Armstrong-Altrin, J.S.**, and Mahmodyan, S. (2022). Whole-rock chemistry and Sr isotope concentrations in the Upper Cretaceous shale, western Iran: evidence for a transition from trench to fore-arc setting. *Arabian Journal of Geosciences*, 15, 1513. (SCI Impact Factor 2020: 1.827). DOI: <https://doi.org/10.1007/s12517-022-10696-0>
ISSN PRINT: 1866-7511; ISSN ELECTRONIC: 1866-7538.
URL: <https://link.springer.com/article/10.1007/s12517-022-10696-0>
- 102) Celis-Hernández, O., Ontiveros-Cuadras, J.F., Ward, R.D., Gióon-García, M.P., Pérez-Ceballos, R.Y., Canales-Delgadillo, J.C., Acevedo-Granados, I.V., Santiago-Pérez, S.S., **Armstrong-Altrin, J.S.**, Merini-Ibarra, M. (2022). Biogeochemical behaviour of cadmium in sediments and potential biological impact on mangroves under anthropogenic influence: A baseline survey from a protected nature reserve. *Marine Pollution Bulletin* 185, 114260. (SCI Impact Factor 2022: 5.8). <https://doi.org/10.1016/j.marpolbul.2022.114260>
URL: <https://www.sciencedirect.com/science/article/abs/pii/S0025326X22009420>
- 103) Mandol, S., Bhuyan, M.S., Islam, M.N., **Armstrong-Altrin, J.S.**, Al-Imran, M., Islam, T., Senapathi, V., Ranganathan, P.C., Sekar, S., Biswas, R.N., Islam, M.S., Gopalakrishnan, G., Karthikeyan, S. (2023). Granulometric and geomorphological characteristics of Rezu Khal canal, Bangladesh: Inferences for sustainable ecosystem and management. *Acta Ecologica Sinica*, 43, 209-222.
ISSN ELECTRONIC: 1872-2032. <https://doi.org/10.1016/j.chnaes.2022.10.001>
URL: <https://www.sciencedirect.com/science/article/pii/S1872203222000749>

- 104) Tsanga, A.D., Bessa, A.Z.E., Ngueutchoua, G., Ngokm, G.S., Jacques-David, S.M., Bela, V.A., Janpou, A.K., Abioui, M., **Armstrong-Altrin, J.S.** (2023). Evaluation of provenance and weathering of beach sediments in the lower part of the Cameroonian coast. *Journal of African Earth Sciences*, 198, 104822. **SCI Impact Factor 2022: 2.3**. <https://doi.org/10.1016/j.jafrearsci.2022.104822>
ISSN PRINT: 1464-343X; ISSN ELECTRONIC: 1879-1956.
URL: <https://www.sciencedirect.com/science/article/pii/S1464343X22003740>
- 105) Patrice Roland Liyouck, Gabriel Ngueutchoua, **J. S. Armstrong-Altrin**, Aristide Nadine Sonfack, Yannick Steve Kontchipe Ngagoum, Armel Zacharie Ekoa Bessa, Victorine Ambassa Bela, Duviol Arcange Tsanga, Armand Sylvain Ludovic Wouatong (2023). Petrography and geochemistry of the Sanaga River sediments, central Cameroon: Constraints on weathering, provenance and tectonic setting. *Journal of African Earth Sciences*, 199, No. 104840. **SCI Impact Factor 2022: 2.3**. DOI: <https://doi.org/10.1016/j.jafrearsci.2023.104840>
ISSN PRINT: 1464-343X; ISSN ELECTRONIC: 1879-1956.
URL: <https://www.sciencedirect.com/science/article/abs/pii/S1464343X23000134>
- 106) **Mayla A. Ramos-Vázquez***, Sanjeet K. Verma, **John S. Armstrong-Altrin**, and Rathinam Arthur James (2023). Provenance significance of quartz grain microtextures in the Salina Cruz and Puerto Angel Beaches, Oaxaca State, Mexican Pacific. *Arabian Journal of Geosciences*, 16:121. **SCI Impact Factor 2020: 1.827**. <https://doi.org/10.1007/s12517-023-11185-8>. * *mi estudiante de doctorado* ISSN PRINT: 1866-7511; ISSN ELECTRONIC: 1866-7538.
URL: <https://link.springer.com/article/10.1007/s12517-023-11185-8>
- 107) Sopia, F.T., Ngueutchoua, G., **Armstrong-Altrin, J.S.**, Njanko, T., Sonfack, A.N., Sonfack, A.N., Ngagoum, Y.S.K., Fossa, D., Tembu, L.T. (2023). Provenance, weathering, and tectonic setting of the Yoyo, Kribi, and Campo beach sediments in the southern Gulf of Guinea, SW Cameroon. *Journal of Earth System Science*, vol. 132, article no. 92, pp. 1-30. <https://doi.org/10.1007/s12040-023-02101-5> SCI Impact Factor 2022: 1.9. ISSN ELECTRONIC: 0973-774X.
- 108) Flores-Ocampo, I.Z.* and **Armstrong-Altrin, J.S.** (2023). Abundance and composition of microplastics in Tampico beach sediments, Tamaulipas State, southern Gulf of Mexico. *Marine pollution Bulletin*, 191, No. 114891 **SCI Impact Factor 2022: 5.8**. * *mi estudiante de doctorado*
DOI: <https://doi.org/10.1016/j.marpolbul.2023.114891>
ISSN PRINT: 0025-326X; ISSN ELECTRONIC: 1879-3363.
URL: <https://www.sciencedirect.com/science/article/pii/S0025326X23003223>
- 109) Velandia-Aquino, L.B., Botello, A.V., Ponce-Vélez, **Armstrong-Altrin, J.S.**, Ruiz-Fernández, A.C., Prado-Pano, B.L., Villanueva-Fragoso, S. (2023). ²¹⁰Pb geochronology and metal concentrations in sediment cores recovered in the

- Alvarado Lagoon System, Veracruz, Mexico. *Chemosphere* 330, No. 138709 (SCI Impact Factor 2022: 8.8.) ISSN PRINT: 0045-6535; ISSN ELECTRONIC: 1879-1298. <https://doi.org/10.1016/j.chemosphere.2023.138709>. URL: <https://www.sciencedirect.com/science/article/abs/pii/S0045653523009761>
- 110) Bela, V.A., Bessa, A.Z.E., Armstrong-Altrin, J.S., Kamani, F.A., Nya, E.D.B., Ngueutchoua, G. (2023). Provenance of clastic sediments: A case study from Cameroon, Central Africa. *Solid Earth Sciences* 8(2), 105-122 (SCI Impact Factor 2022: 2). <https://doi.org/10.1016/j.sesci.2023.03.002>.
- 111) Amin-Rasouli, H., Minami, M., Armstrong-Altrin, J.S., Jou, N.H., and Moradi, M. (2023). Geochemistry, and ¹⁴C dating of guano deposits in the Karaftu Cave, Kurdistan, Iran: implication for paleoenvironment. *Environmental Monitoring and Assessment*, 195:1144 (SCI Impact Factor 2022: 3.0).
- 112) Botello, A.V., Ponce-Velez, G., Armstrong-Altrin, J.S. and Villanueva, S.F (2023). Concentration of polycyclic aromatic hydrocarbons (PAHs) in sediments from the Tampamachoco lagoon, Tuxpan River mouth, Gulf of Mexico. *Arabian Journal of Geosciences*, 16:556 (SCI Impact Factor 2020: 1.827).

Book Chapter

- 113) Nagarajan, R., Armstrong-Altrin, J.S., Kessler, F.L., Jong, J. (2017). Petrological and geochemical constraints on provenance, paleo-weathering and tectonic setting of clastic sediments from the Neogene Lambir and Sibuti Formations, Northwest Borneo. In: Rajat Mazumder, (Ed.), *Sediment Provenance*. Elsevier Amsterdam, Netherlands. Chapter 7. pp. 123-153. (*Citas Google Scholar = 60; Scopus = 44*). DOI Chapter: <https://doi.org/10.1016/B978-0-12-803386-9.00007-1>; ISSN: 978-0-12-803386-9; DOI:10.1016/B978-0-12-803386-9.00007-1.
- 114) [Mayla A. Ramos-Vázquez*](#), John S. Armstrong-Altrin, Jayagopal Madhavaraju, Adolfo Gracia, and David Alberto Salas-de-León (2022). Mineralogy and geochemistry of marine sediments in the Northeastern Gulf of Mexico. In: Armstrong-Altrin JA, Pandarinath K, Verma S. (Eds.), *Geochemical Treasures and Petrogenetic Processes*. Chapter 7, 32 pages *Citas Google Scholar = 12*. https://doi.org/10.1007/978-981-19-4782-7_7. * *mi estudiante de doctorado* ISSN 978-981-19-4781-0; ISSN 978-981-19-4782-7 (eBook) URL: https://link.springer.com/chapter/10.1007/978-981-19-4782-7_7
- 115) E. Ramírez-Montoya, J. Madhavaraju, C.M. González-León, John S. Armstrong-Altrin, and R. Monreal (2022). Detrital Zircon Geochemistry in the Morita Formation, Northern Sonora, Mexico: Implications for Origin and Source Rock Type. In: Armstrong-Altrin JA, Pandarinath K, Verma S. (Eds.), *Geochemical*

Treasures and Petrogenetic Processes. Chapter 12, 37 pages
https://doi.org/10.1007/978-981-19-4782-7_12. *Citas Google Scholar = 7.*
ISSN 978-981-19-4781-0; ISSN 978-981-19-4782-7 (eBook)
URL: https://link.springer.com/chapter/10.1007/978-981-19-4782-7_12

Concluded research/thesis projects under my supervision (Laboratorio de Sedimentología, CU, Ciudad de México)

Doctorado tesis concluido (PhD)

- 1) **Héctor Jesús Tapia Fernández** (2013 - marzo 2018, **concluido en 3 de octubre del 2018**). Sedimentología, petrografía y geoquímica de sedimentos del litoral sur del Golfo de México: Implicaciones sobre el ambiente de depósito y procedencia. Posgrado en Ciencias de la Tierra, Instituto de Geología, UNAM (no. de cuenta: 512011431).
(Link:
https://tesiunam.dgb.unam.mx/F/L67NQ4K2ARN8UBT2X97GY3XFBFGKNRBKI7A42278LUJME9UT1G-25165?func=full-set-set&set_number=694577&set_entry=000002&format=999)
- 2) **Ramos Vázquez Mayla Alhelí** (enero 2017 - diciembre 2020, **concluido en 7 de abril del 2021**). Procedencia de sedimentos detríticos de playas y mar profundo del Golfo de México. Posgrado en Ciencias del Mar y Limnología, ICML, UNAM.
(Link:
https://tesiunam.dgb.unam.mx/F/51KQM1CJXABB3IC25AAMATC89AY9T5SGK4J4YA1DEUVN5LXV4E-35145?func=full-set-set&set_number=694824&set_entry=000008&format=999)
- 3) **Martha Patricia Ayala Pérez** (agosto 2017 - Julio 2021, **concluido en 17 de diciembre del 2021**). Sedimentología del subambiente de infraplaya adyacente a las desembocaduras de los ríos Grijalva y San Pedro-San Pablo, México. Posgrado en Ciencias del Mar y Limnología, ICML, UNAM.
(Link:
https://tesiunam.dgb.unam.mx/F/51KQM1CJXABB3IC25AAMATC89AY9T5SGK4J4YA1DEUVN5LXV4E-33001?func=full-set-set&set_number=694728&set_entry=000005&format=999)
- 4) **Ekoa Bessa Armel Zacharie** (**concluido en 19 de julio del 2021**). Lacustrine sediments from three regions of Cameroon (Yaoundé, Dizangue and Ngaoundere): Sedimentological and petrological characterization for a paleoenvironmental reconstruction. Department of Earth Sciences, Faculty of Science, The University of Yaounde I.

Maestría tesis concluido (MSc)

- 1) **Leslie Patricia Córdoba Saldaña (concluido en 13 diciembre 2011)**. Análisis granulométrico, petrográfico y geoquímico de arenas recientes en tres playas de México (Tecolutla, Bahía Kino y San Carlos): Implicación de procedencia. Posgrado en Ciencias del Mar y Limnología, ICML, UNAM, Mexico. *MSc thesis*.
(Link:
https://tesiunam.dgb.unam.mx/F/51KQM1CJXABB3IC25AAMATC89AY9T5SGK4J4YA1DEUVN5LXV4E-02462?func=full-set-set&set_number=694886&set_entry=000025&format=999)
- 2) **Natalhy Pineda Olmedo (concluido en 31 Julio 2013)**. Análisis de transporte y composición de los sedimentos recientes de las playas de Nautla y la ciudad de Veracruz en el Golfo de Mexico. Posgrado en Ciencias del Mar y Limnología, ICML, UNAM, Mexico. *MSc thesis. 92p*.
(Link:
https://tesiunam.dgb.unam.mx/F/51KQM1CJXABB3IC25AAMATC89AY9T5SGK4J4YA1DEUVN5LXV4E-44327?func=full-set-set&set_number=694886&set_entry=000018&format=999)
- 3) **Héctor Jesús Tapia Fernández (concluido en 31 julio del 2013)**. Análisis composicional de sedimentos recientes en las playas de Tamiahua y Tuxpan, Golfo de México: Implicación sobre su procedencia. Posgrado en Ciencias del Mar y Limnología, ICML, UNAM, Mexico. *MSc thesis. 91p*.
(Link:
https://tesiunam.dgb.unam.mx/F/51KQM1CJXABB3IC25AAMATC89AY9T5SGK4J4YA1DEUVN5LXV4E-45590?func=full-set-set&set_number=694886&set_entry=000020&format=999)
- 4) **Hernandez Coronado Claudia Janete** (agosto 2013 - enero 2016; **concluido en 22 enero 2016**). Petrografía y geoquímica de arenas de playas del suroeste del Golfo de México: implicación de procedencia. Posgrado en Ciencias del Mar y Limnología, ICML, UNAM.
(Link:
https://tesiunam.dgb.unam.mx/F/51KQM1CJXABB3IC25AAMATC89AY9T5SGK4J4YA1DEUVN5LXV4E-43454?func=full-set-set&set_number=694886&set_entry=000015&format=999)
- 5) **Mario Emilio Marca Castillo** (enero 2016 - febrero 2018; **concluido en 9 marzo 2018**). Textura, mineralogía, y geoquímica de los sedimentos de talud frente a Los Tuxtlas, Veracruz: implicaciones sobre intemperismo, procedencia y ambientes deposicionales. Posgrado en Ciencias del Mar y Limnología, ICML, UNAM. (no. de cuenta: 516024750).

- (Link:
https://tesiunam.dgb.unam.mx/F/51KQM1CJXABB3IC25AAMATC89AY9T5S GK4J4YA1DEUVN5LXV4E-40751?func=full-set-set&set_number=694886&set_entry=000013&format=999)
- 6) **Flores Ocampo Itzamna Zaknite** (agosto 2018 - julio 2020; **concluido en 30 de septiembre del 2020**). Geoquímica de sedimentos y geocronología U-Pb de zircones detríticos de playa Norte y playa Tamiahua del Golfo de México: Implicación de procedencia. Posgrado en Ciencias de la Tierra, Instituto de Geología, UNAM.
(Link:
https://tesiunam.dgb.unam.mx/F/51KQM1CJXABB3IC25AAMATC89AY9T5S GK4J4YA1DEUVN5LXV4E-36743?func=full-set-set&set_number=694851&set_entry=000010&format=999)
- 7) **Bárbara Yaneth Pérez Alvarado** (agosto 2019 - Julio 2021; **concluido en 18 de noviembre del 2021**). Granulometría y geoquímica de los sedimentos de playa **Boca del Rio**, Veracruz del sureste del Golfo de México: Implicación de procedencia. Posgrado en Ciencias del Mar y Limnología, ICML, UNAM.
(Link:
https://tesiunam.dgb.unam.mx/F/51KQM1CJXABB3IC25AAMATC89AY9T5S GK4J4YA1DEUVN5LXV4E-34305?func=full-set-set&set_number=694808&set_entry=000007&format=999)
- 8) **Fabiola Vega Bautista** (agosto 2019 - julio 2021; **concluido en 15 de diciembre del 2021**). Granulometría y geoquímica de sedimentos detríticos de las playas **Tecolutla y Coatzacoalcos** del Golfo de México, México: Implicaciones de contaminación por metales pesados y su procedencia. Posgrado en Ciencias del Mar y Limnología (PCML), UNAM.
(https://tesiunam.dgb.unam.mx/F/51KQM1CJXABB3IC25AAMATC89AY9T5S GK4J4YA1DEUVN5LXV4E-36036?func=full-set-set&set_number=694835&set_entry=000009&format=999)
- 9) **Edith Xiadani Castro Zárate** (agosto 2020 - Julio 2022; **concluido en 14 de diciembre del 2022**). Contaminación por microplásticos y metales en sedimentos costeros de playa Miramar, Tamaulipas, en el noroeste del Golfo de México. Posgrado en Ciencias del Mar y Limnología, ICML, UNAM.
(Link:
https://tesiunam.dgb.unam.mx/F/51KQM1CJXABB3IC25AAMATC89AY9T5S GK4J4YA1DEUVN5LXV4E-31240?func=full-set-set&set_number=694693&set_entry=000004&format=999)

Licenciatura tesis concluido (BSc)

- 1) **Juan Carlos Estrada Omaña (concluido en 20 marzo 2007).** Características granulométricas y geoquímicas de arena de playa de Tecolutla, Veracruz, México: Implicaciones de procedencia y ambientes sedimentarios de depósito. Área Académica de Química, Licenciatura en Química, Instituto de Ciencias Básicas e Ingeniería (ICBI), Universidad Autónoma del Estado de Hidalgo (UAEH), Pachuca, Mexico. *BSc thesis.*
- 2) **Norma Liliana Cruz Ortiz (concluido en octubre 2007).** Petrografía y geoquímica de arenas de Playas de México: Implicaciones de procedencia y ambientes tectónicos. Licenciatura en Ingeniería en Geología Ambiental, ICBI, Universidad Autónoma del Estado de Hidalgo (UAEH). *BSc thesis.*
- 3) **Luis Miguel Reyes Campero (concluido en 29 de mayo 2008).** Petrografía y geoquímica de las rocas carbonatadas de la Formación Mural, en la sección Cerro Pimas del Grupo Bisbee, al norte de Sonora, México. Licenciatura en Ingeniería en Geología Ambiental, ICBI, Universidad Autónoma del Estado de Hidalgo (UAEH). *BSc thesis.*
- 4) **Janet Luna Rodriguez (concluido en 4 junio 2008).** Petrografía y geoquímica de isótopos estables ($\delta^{18}\text{O}$ - $\delta^{13}\text{C}$) en calizas de la Formación El Abra, Hidalgo, México: Implicaciones de ambientes diagenéticos. Licenciatura en Ingeniería en Geología Ambiental, ICBI, Universidad Autónoma del Estado de Hidalgo (UAEH). *BSc thesis.*
- 5) **Ávila Ramírez Gladis Marley (concluido en 22 enero 2009).** Geoquímica de elementos traza y tierras raras de rocas clásticas del anticlinorio de Huayacocotla, en la región de Molango, Estado de Hidalgo, México. Área Académica de Química, Licenciatura en Química, Instituto de Ciencias Básicas e Ingeniería (ICBI), Universidad Autónoma del Estado de Hidalgo (UAEH), Pachuca, Mexico. *BSc thesis*
- 6) **Pamela Granados Ramírez (concluido en 8 marzo 2010).** Análisis granulométrico y geoquímica de arenas de playa del Golfo de México, México: implicación sobre procedencia. Licenciatura en Ingeniería en Geología Ambiental, ICBI, Univ. Autónoma del Estado de Hidalgo (UAEH), Pachuca, Mexico. *BSc thesis.*
- 7) **Adriana Cruz Martínez (concluido en 26 mayo 2010).** Geoquímica y Petrología de las rocas clásticas de la Formación Huayacocotla en el NE del Estado de Hidalgo, México. Licenciatura en Ingeniería en Geología Ambiental, ICBI,

Universidad Autónoma del Estado de Hidalgo (UAEH), Pachuca, Mexico. *BSc thesis*.

- 8) **Mario Alberto Ramírez Muñoz (concluido en 22 octubre 2012)**. Geoquímica de sedimentos de playa Chachalacas, Veracruz, Golfo de México: Implicaciones sobre procedencia y ambiente tectónico. Facultad de Ingeniería, UNAM, México. BSc thesis.
(Link:https://tesiunam.dgb.unam.mx/F/51KQM1CJXABB3IC25AAMATC89AY9T5SGK4J4YA1DEUVN5LXV4E-00946?func=full-set-set&set_number=694886&set_entry=000022&format=999)
- 9) **Arturo Sandoval Castillo (concluido en 18 abril 2013)**. Geoquímica de las rocas carbonatadas de la formación El Abra (Actopan), México: implicaciones de condiciones palaeo-redox y procedencia. Facultad de Ingeniería, UNAM, México. *BSc thesis*.
- 10) **Barbara Yaneth Pérez Alvarado (concluido en 1 septiembre 2014)**. Granulometría y geoquímica de arenas de dos playas y lodos de plataforma del Golfo de México: implicación de procedencia. Licenciatura en Ingeniería en Geología Ambiental, Universidad Autónoma del Estado de Hidalgo.
- 11) **Yuletmi Loremar González Moreno (concluido en 10 febrero 2015)**. Geoquímica inorgánica de rocas siliciclásticas del afloramiento DECA Parque Cretácico en la Sierra Cuesta El Infierno, Municipio de Aldama, Chihuahua (México): clasificación y análisis de procedencia. Licenciatura en Ingeniería en Geología Ambiental, Universidad Autónoma del Estado de Hidalgo.
- 12) **María Guadalupe Ramos Velasco (concluido en 7 marzo 2016)**. Geoquímica de sedimentos de núcleo de plataforma del Golfo de México: Implicación de procedencia. Licenciatura en Ingeniería en Geología Ambiental, Universidad Autónoma del Estado de Hidalgo (UAEH), Pachuca, Hidalgo.
- 13) **Violeta Hernández Hinojosa (concluido en 16 marzo 2016)**. Geoquímica de arenas de dos playas del Golfo de México: Implicación de procedencia e intemperismo. Licenciatura en Ingeniería en Geología Ambiental, Universidad Autónoma del Estado de Hidalgo (UAEH), Pachuca, Hidalgo.
- 14) **Anaya Gregorio Abigail (concluido en 12 junio 2017)**. Geoquímica y mineralogía de sedimentos de mar profundo del suroeste del Golfo de México, México: Implicaciones sobre su procedencia. Licenciatura en Ingeniería en Geología Ambiental, ICBI, Universidad Autónoma del Estado de Hidalgo.

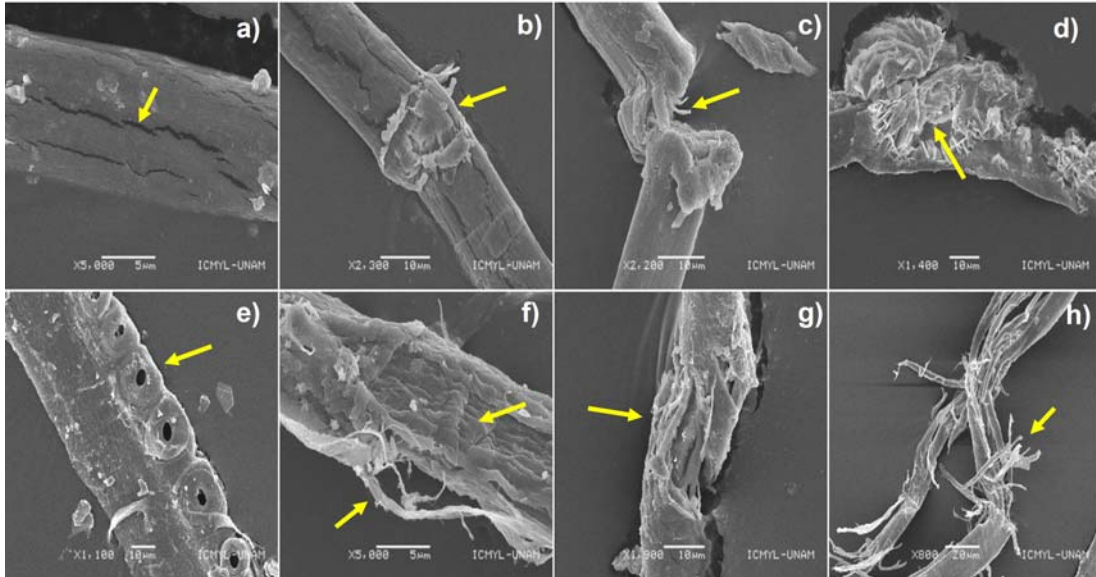
- 15) **Ana Cristina Zavala León (concluido en 5 junio 2018).** Geoquímica y datación de sedimentos del suroeste del Golfo de México, México: Implicación de procedencia. Licenciatura en Ingeniería en Geología Ambiental, ICBI, Universidad Autónoma del Estado de Hidalgo.
- 16) **Vanessa del Carmen González Marín (concluido en 20 de mayo del 2019).** Geoquímica y geocronología de U-Pb en circones de la playa Montepío, San Andrés Tuxtla, sureste del Golfo de México, México: Implicación de procedencia. Licenciatura en Ingeniería en Geología Ambiental, ICBI, UAEH.
- 17) **Hermenegildo Ruiz Nadia Yutzi (concluido en 12 de junio del 2019).** Geoquímica y geocronología de U-Pb en circones de la playa Chachalacas, estado de Veracruz, Golfo de México: Implicaciones de procedencia. Facultad de Ingeniería, Universidad Nacional Autónoma de México.
(Link:https://tesiunam.dgb.unam.mx/F/51KQM1CJXABB3IC25AAMATC89AY9T5SGK4J4YA1DEUVN5LXV4E-40004?func=full-set-set&set_number=694886&set_entry=000012&format=999)
- 18) **Tania Sayuri Paulín Zavala (concluido en 4 de marzo del 2020).** Geoquímica y geocronología de U-Pb en circones de la playa Miramar Sur, estado de Tamaulipas, Golfo de México, México: Implicación de procedencia. Facultad de Ingeniería, Universidad Nacional Autónoma de México.
(Link:https://tesiunam.dgb.unam.mx/F/51KQM1CJXABB3IC25AAMATC89AY9T5SGK4J4YA1DEUVN5LXV4E-38561?func=full-set-set&set_number=694886&set_entry=000011&format=999)
- 19) **Damián Martínez Ruíz (concluido en 9 de diciembre del 2021).** *Análisis de microtexturas de sedimentos de las playas Boca del Cielo y Chocohuital, Estado de Chiapas, México: implicación de procedencia.* Ingeniería Geológica, Escuela Superior de Ingeniería y Arquitectura, Instituto Politécnico Nacional, Mexico.
- 20) **Mayte Flores Cortés (concluido en 25 de abril del 2022).** *Características texturales y contaminación por microplásticos en los sedimentos costeros del municipio de Tecolutla, Veracruz.* Facultad de Ciencias, UNAM, Ciudad de México.
(Link:https://tesiunam.dgb.unam.mx/F/L67NQ4K2ARN8UBT2X97GY3XFBFGKNRBKI7A42278LUJME9UT1G-22920?func=full-set-set&set_number=694492&set_entry=000001&format=999)
- 21) **Nadia Alvarado Enciso (concluido en 29 de noviembre del 2022).** *Características texturales y contaminación por microplásticos de los sedimentos costeros de la región de Salina Cruz, Oaxaca en el Pacífico mexicano.* Facultad de Ingeniería, UNAM, Ciudad de México.

(Link:https://tesiunam.dgb.unam.mx/F/51KQM1CJXABB3IC25AAMATC89AY9T5SGK4J4YA1DEUVN5LXV4E-29248?func=full-set-set&set_number=694682&set_entry=000003&format=999)

- 22) **Gloria Daniela Fernández Guevara (concluido en 6 de diciembre del 2022).** *Granulometría y geoquímica de sedimentos detríticos de la playa Mis Amores, Tuxpan, Golfo de México: Implicaciones de procedencia y contaminación por metales pesados.* Facultad de Ingeniería, UNAM, Ciudad de México.
 - 23) **Katherinne Macias Martinez (concluido en 14 de diciembre del 2022).** *Mineralogía y Microtexturas de sedimentos de las playas Monte Pio y Punta Roca Partida en la región de los Tuxtlas en el estado de Veracruz.* Ingeniería Geológica, Escuela Superior de Ingeniería y Arquitectura, Instituto Politécnico Nacional, Mexico.
 - 24) **Karen Sarahi Torres Nieto (marzo 2021 - junio 2023; concluido en 8 de june del 2023).** *Geoquímico de sedimentos de un núcleo recolectado en el mar profundo de suroeste del Golfo de México.* Ingeniería Geológica, Escuela Superior de Ingeniería y Arquitectura, Instituto Politécnico Nacional, México.
 - 25) **Pérez Cuna Bianca Arely (marzo 2021 - junio 2023; concluido en 21 de june del 2023).** *Procedencia de sedimentos de la playa Tecolutla, Golfo de México, México.* Facultad de Ingeniería, Universidad Nacional Autónoma de México.
-

SEM IMAGES OF MICROPLASTICS

Microplastics, Tampico Beach, Gulf of Mexico (Marine Pollution Bulletin, 2023).



Microplastics, Tecolutla Beach, Gulf of Mexico (Environ. Monit. Assess., 2022).

